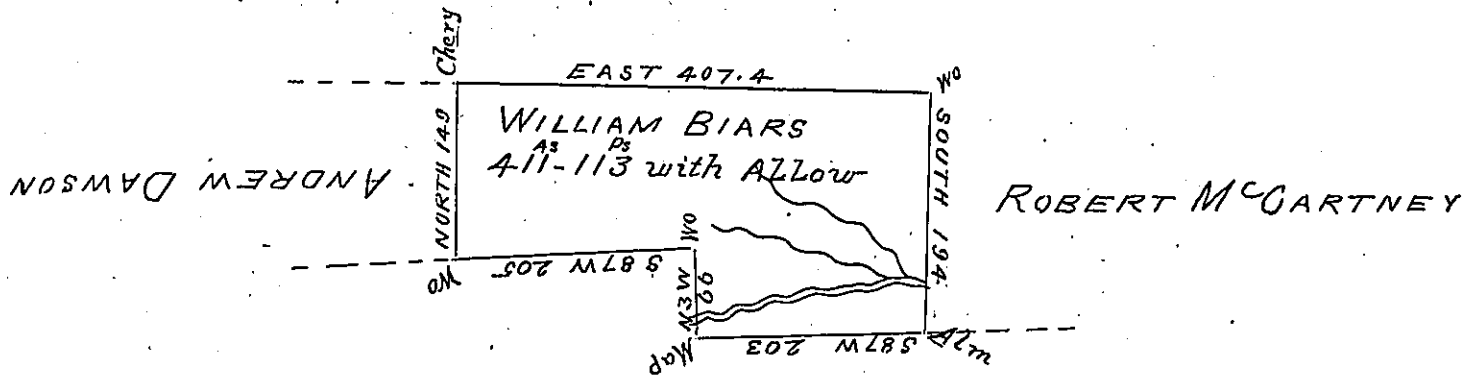


JOHN E LARIMER



DONATION LAND

Situate in Mercer County Sandy creek
 Township on the waters of Sandy contain-
 ing four hundred and Eleven Acres and one
 hundred and thirteen Perches with Allowance
 of six percent Surveyed April first 1803 in
 pursuence of a Warrent granted to Wm Biars
 Dated February 3rd 1803

John Findley D.S.
 to Samuel Cochran Esqr S.S.

IN TESTIMONY that the above is a copy of the original remaining on file in
 the Department of Internal Affairs of Pennsylvania, made
 conformably to an Act of Assembly approved the 16th day of
 February, 1833, I have hereunto set my Hand and caused
 the Seal of said Department to be affixed at Harrisburg,
 this fourth day of January 1904.

James B. Pomeroy
 Secretary of Internal Affairs.